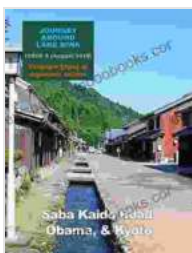


Embark on a Journey Around Lake Biwa: Discover the Hidden Treasures of Japan's Largest Freshwater Lake

Nestled in the heart of Japan, Lake Biwa is a vast and serene freshwater body that has captivated the hearts and minds of travelers for centuries. As the largest lake in the country, Biwa offers an unparalleled array of natural and cultural attractions, promising an unforgettable journey of discovery and wonder.



Journey Around Lake Biwa, 8: Saba Kaido Road, Obama, & Kyoto by Hallie Bradley

★★★★☆ 4 out of 5

Language : English

File size : 31866 KB

Screen Reader : Supported

Print length : 45 pages



Prepare to be enchanted by the tranquil beauty of the lake's crystal-clear waters, surrounded by rolling hills, lush forests, and ancient temples that whisper tales of bygone eras. From the bustling city of Otsu to the picturesque towns of Hikone and Nagahama, each destination around Biwa unfolds a unique tapestry of history, culture, and breathtaking scenery.

Unveiling the Historic Treasures

At the heart of Lake Biwa's allure lies its rich history, which has left an enduring mark on the surrounding landscape. As you journey around the

lake, you will encounter a wealth of historic landmarks that offer a glimpse into Japan's fascinating past.

Hikone Castle: A Majestic Citadel



Towering proudly over the city of Hikone, Hikone Castle is a prime example of Japan's feudal architecture. This imposing hilltop fortress, built in the 17th century, has withstood the test of time and remains one of the best-preserved castles in the country. Explore its intricate gates, turrets, and moats, and soak in the panoramic views of Lake Biwa that stretch out before you.

Enryaku-ji Temple: A Mountaintop Sanctuary



Enryaku-ji Temple, a UNESCO World Heritage Site perched atop Mount Hiei

Perched high atop Mount Hiei, Enryaku-ji Temple is a UNESCO World Heritage Site that has served as a spiritual sanctuary for over 1,200 years. Founded in 788 AD by the revered Buddhist monk Saichō, this vast temple complex encompasses multiple halls, pagodas, and gardens, offering a serene retreat amidst the natural beauty of the mountain.

Exploring the Vibrant Cities

Beyond its historical treasures, Lake Biwa is also home to a cluster of vibrant cities that offer a blend of modern amenities and traditional charm.

Otsu: The Gateway to Biwa



As the capital of Shiga Prefecture, Otsu serves as the gateway to Lake Biwa. This bustling city is a hub of commerce, culture, and transportation, offering a convenient starting point for your journey around the lake. Explore Otsu Castle, stroll through the lively Nishiki Market, or take a boat ride on Lake Biwa to soak in the city's vibrant atmosphere.

Hikone: A City of Culture and History



Hikone City, a charming town known for its historic castle and vibrant cultural scene

Nestled along the eastern shore of Lake Biwa, Hikone is a charming town that perfectly blends its rich history with modern conveniences. In addition to Hikone Castle, the town is home to a host of museums, temples, and historical sites that tell the story of its past. Don't miss the chance to visit the Hikone Museum of Art, the Meisho-ji Temple, and the Hachiman Shrine.

Immersing Yourself in Nature's Embrace

Lake Biwa's natural beauty is undeniable, inviting you to immerse yourself in its serene landscapes and abundant wildlife.

Biwako Valley: A Tranquil Oasis



Escape the hustle and bustle at Biwako Valley, a secluded mountain valley located in the northern part of the lake. This tranquil oasis offers a network of scenic hiking trails that lead to waterfalls, mountain peaks, and hidden hot springs. Along the way, keep an eye out for the native flora and fauna, including wild orchids and Japanese macaques.

Nagahama Black Bird Sanctuary: A Haven for Wildlife



Nagahama Black Bird Sanctuary, a vast wetland teeming with migratory birds

At the southern tip of Lake Biwa lies the Nagahama Black Bird Sanctuary, a vast wetland that provides a sanctuary for a wide range of migratory birds. This ecologically important area is home to over 200 species of birds, including the endangered black stork. Take a leisurely boat ride through the sanctuary and witness the spectacle of thousands of birds taking flight.

Savoring the Local Delights

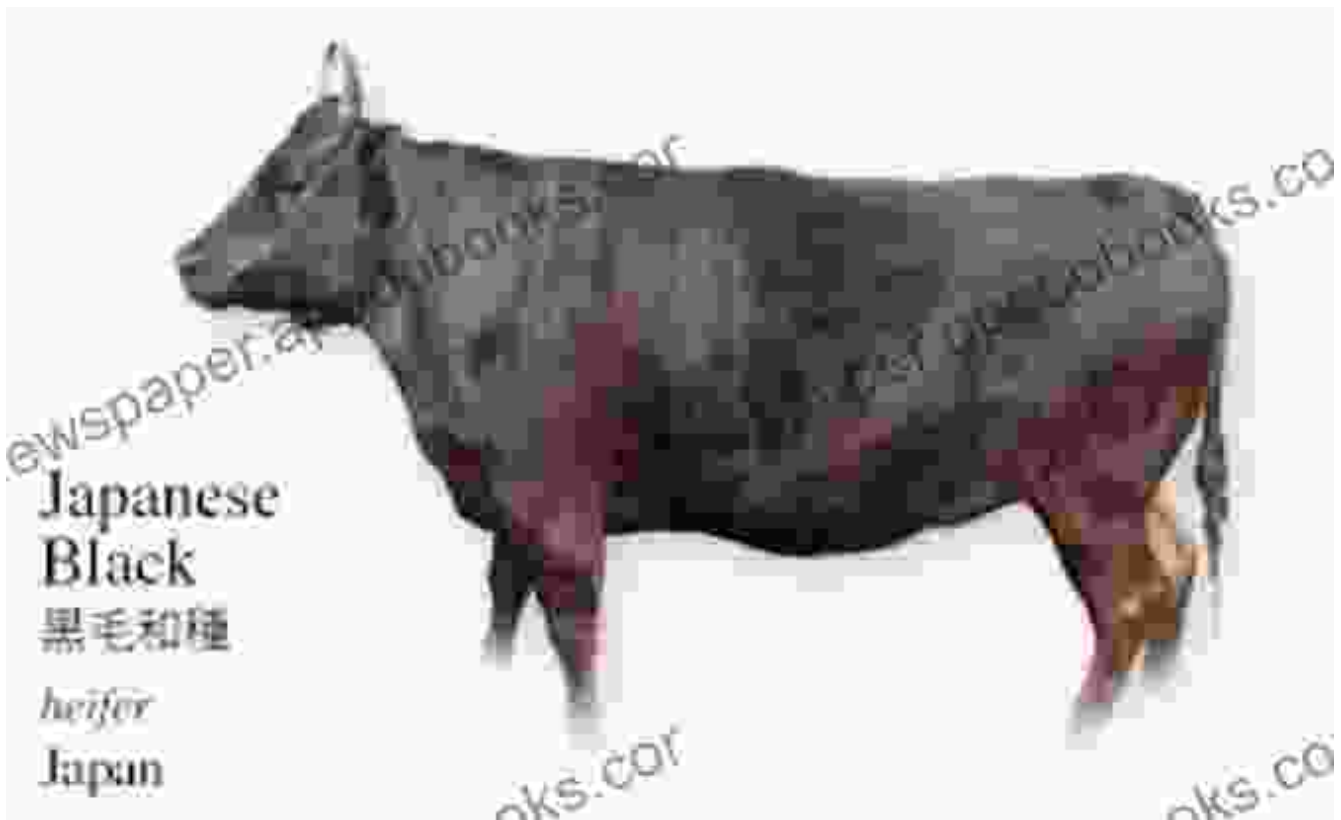
No journey around Lake Biwa would be complete without sampling the region's delectable cuisine.

Lake Biwa Eel: A Local Delicacy



Lake Biwa is renowned for its prized eel, known as "unagi." This succulent fish has a firm yet tender texture and a rich, flavorful taste that has made it a beloved delicacy throughout Japan. Indulge in a traditional "unagi" meal, typically served grilled over charcoal and paired with a sweet dipping sauce.

Omi Beef: A Culinary Masterpiece



Japanese
Black
黒毛和種
heifer
Japan

Omi beef, a premium Japanese black cattle breed known for its exceptional marbling and flavor

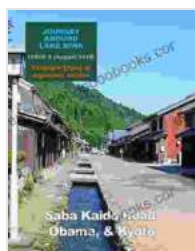
The Shiga Prefecture, which surrounds Lake Biwa, is also home to the renowned Omi beef. This premium Japanese black cattle breed is known for its exceptional marbling and rich, buttery flavor. Savor the melt-in-your-mouth texture of Omi beef in a traditional sukiyaki or shabu-shabu hot pot.

Planning Your Journey

To fully experience the wonders of Lake Biwa, it is recommended to plan your journey carefully. Here are some tips to help you make the most of your time:

- **Choose the right time of year:** Lake Biwa is beautiful all year round, but the best time to visit is during spring or autumn when the weather is mild and pleasant.
- **Allow ample time:** To truly appreciate the lake and its surroundings, plan to spend at least 3-5 days in the area.
- **Get around:** Lake Biwa is easily accessible by train or bus from major cities like Kyoto and Osaka. Once in the area, you can rent a car or use local transportation to explore.
- **Stay connected:** Free Download a Japan Rail Pass or ICOCA card for convenient and affordable travel on public transportation.
- **Pack appropriately:** Depending on the season, pack comfortable clothing, hiking shoes, and rain gear.

A journey around Lake Biwa is a captivating experience that offers a blend of history, culture, nature, and culinary delights. From the grandeur of Hikone Castle to the serenity of Biwako Valley, from the



Journey Around Lake Biwa, 8: Saba Kaido Road, Obama, & Kyoto

by Hallie Bradley

★★★★☆ 4 out of 5

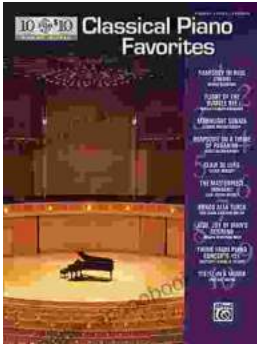
Language : English

File size : 31866 KB

Screen Reader : Supported

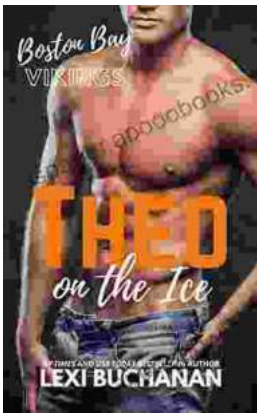
Print length : 45 pages





Discover the Enchanting World of Classical Piano with "10 For 10 Sheet Music Classical Piano Favorites Piano Solos"

A Symphony of Timeless Masterpieces Prepare to be captivated by a harmonious blend of classical masterpieces in "10 For 10 Sheet Music Classical Piano...



Theo On The Ice Boston Bay Vikings: A Hockey Adventure for the Ages

Theo On The Ice Boston Bay Vikings is a thrilling hockey adventure that will captivate readers of all ages. Theo, a young boy with a dream of playing...