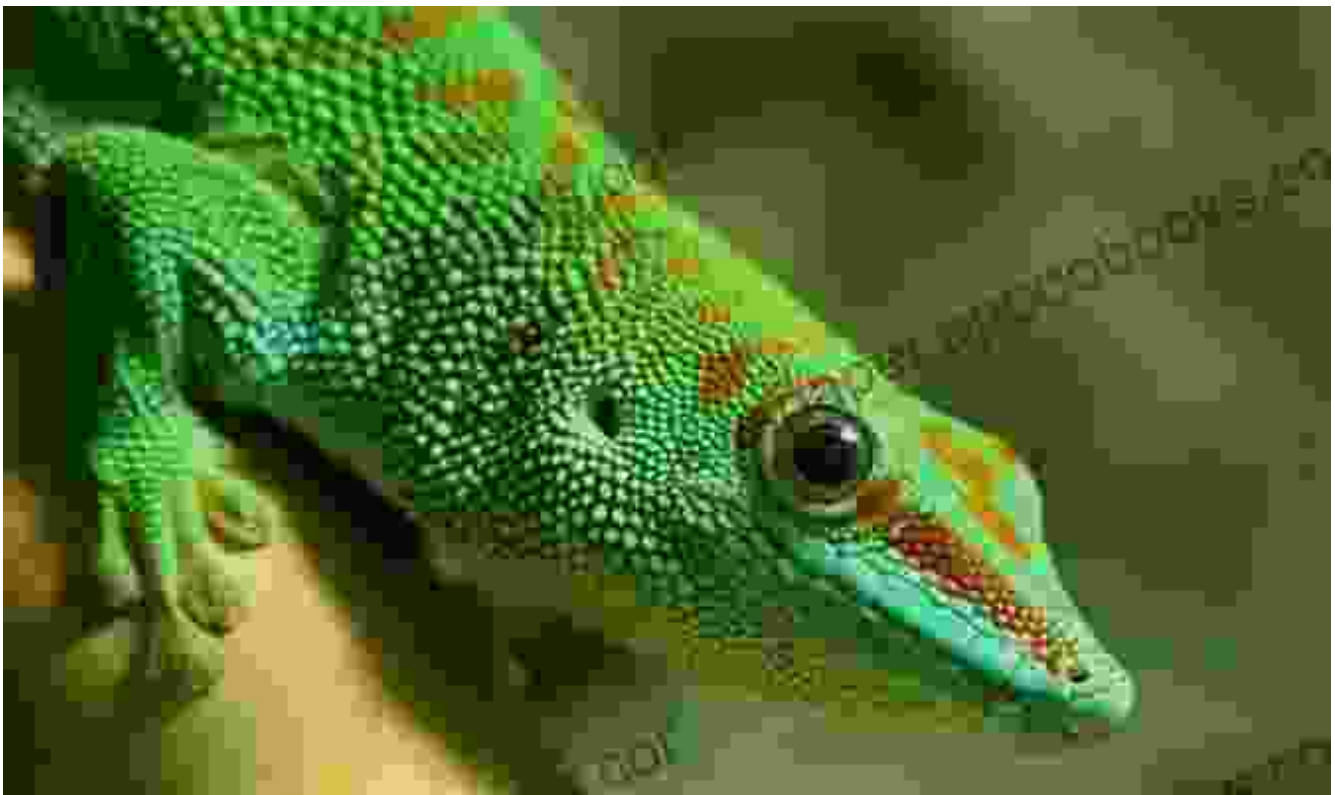


Giant Day Gecko Care: A Comprehensive Guide to Housing, Training, and More!

to Giant Day Geckos

Giant Day Geckos (*Phelsuma grandis*) are captivating reptiles native to the lush rainforests of Madagascar. Their vibrant green coloration, adorned with striking red spots and blue markings, makes them a sight to behold. These active and curious geckos are renowned for their diurnal nature, basking under the warmth of the sun during the day. If you're considering bringing a Giant Day Gecko into your life, this comprehensive guide will provide you with all the essential knowledge to ensure its well-being and thrive under your care.





giant day gecko: Every Thing You Need To Know On Giant Day Gecko Housing, Training, Care And It Diet

Feeding by Gayle Mindes

★★★★☆ 4.3 out of 5

Language : English
File size : 952 KB
Text-to-Speech : Enabled
Enhanced typesetting : Enabled
Lending : Enabled
Screen Reader : Supported
Print length : 9 pages



Housing Requirements

Creating an appropriate environment for your Giant Day Gecko is crucial for its health and happiness. Here are the key considerations:

Enclosure Size

Provide a spacious enclosure that allows your gecko ample room to move around, climb, and bask. A minimum size of 18" x 18" x 24" (length x width x height) is recommended for a single gecko. For multiple geckos, increase the enclosure size accordingly.

Enclosure Type

Glass or plastic terrariums with mesh tops are ideal for Giant Day Geckos. Ensure the enclosure has secure doors to prevent escape and adequate ventilation to maintain proper air circulation.

Substrate

Cover the bottom of the enclosure with a suitable substrate, such as coconut fiber, reptile carpet, or paper towels. These materials provide a comfortable and natural surface for your gecko to move and burrow on.

Heating and Lighting

Maintain a temperature gradient within the enclosure, with a basking spot of 85-90°F (29-32°C) and a cooler area of 75-80°F (24-27°C). Provide UVB lighting for 10-12 hours per day to facilitate vitamin D3 synthesis, essential for calcium absorption.

Plants and Decor

Adorn the enclosure with live or artificial plants to create a naturalistic environment for your gecko. Add branches, rocks, and hiding places to provide opportunities for climbing, basking, and shelter.

Training and Handling

Giant Day Geckos are generally docile creatures but can be skittish initially. With patience and positive reinforcement, you can train your gecko to become more comfortable with handling.

Taming

Start by gently placing your hand inside the enclosure and allowing your gecko to explore it. Avoid sudden movements and speak in a soothing voice. Once your gecko becomes accustomed to your presence, you can gradually pick it up for brief periods.

Handling

Always handle your gecko with care, supporting its body and tail. Avoid holding it too tightly or for extended periods as this can stress the animal.

Supervise children when handling geckos to prevent accidental injuries.

Diet and Nutrition

Giant Day Geckos are primarily insectivores, with a diet consisting mainly of live insects. Offer a variety of insects such as crickets, dubia roaches, mealworms, and waxworms. Dust insects with a calcium and vitamin D3 supplement twice a week to ensure proper nutrition.

Additionally, Giant Day Geckos enjoy consuming fruits and nectar. Offer small amounts of mashed fruits, such as bananas, mangoes, and papaya, as treats once or twice a week. Provide a shallow water dish with fresh water at all times.

Health and Hygiene

Regular health checks are essential to ensure the well-being of your Giant Day Gecko. Here are some key aspects to monitor:

Shedding

Geckos shed their skin regularly as they grow. Provide a humid environment during shedding by misting the enclosure lightly. Ensure your gecko has access to a moist hide box to facilitate the shedding process.

Parasites

Geckos can be susceptible to parasites, such as mites and worms. Consult a veterinarian for proper diagnosis and treatment if you suspect your gecko has parasites.

Metabolic Bone Disease

Metabolic Bone Disease (MBD) is a common condition in reptiles that results from improper calcium and vitamin D3 intake. Ensure your gecko receives adequate UVB lighting and supplementation to prevent this condition.

Giant Day Geckos make captivating and rewarding pets when provided with proper care and attention. By following the guidelines outlined in this comprehensive guide, you can ensure that your gecko thrives in your home and enjoys a long and healthy life. Remember to consult with a veterinarian regularly for professional advice and to provide your gecko with the best possible care.



giant day gecko: Every Thing You Need To Know On Giant Day Gecko Housing, Training, Care And It Diet

Feeding by Gayle Mindes

★★★★☆ 4.3 out of 5

Language : English
File size : 952 KB
Text-to-Speech : Enabled
Enhanced typesetting : Enabled
Lending : Enabled
Screen Reader : Supported
Print length : 9 pages

FREE

DOWNLOAD E-BOOK





Discover the Enchanting World of Classical Piano with "10 For 10 Sheet Music Classical Piano Favorites Piano Solos"

A Symphony of Timeless Masterpieces Prepare to be captivated by a harmonious blend of classical masterpieces in "10 For 10 Sheet Music Classical Piano...



Theo On The Ice Boston Bay Vikings: A Hockey Adventure for the Ages

Theo On The Ice Boston Bay Vikings is a thrilling hockey adventure that will captivate readers of all ages. Theo, a young boy with a dream of playing...