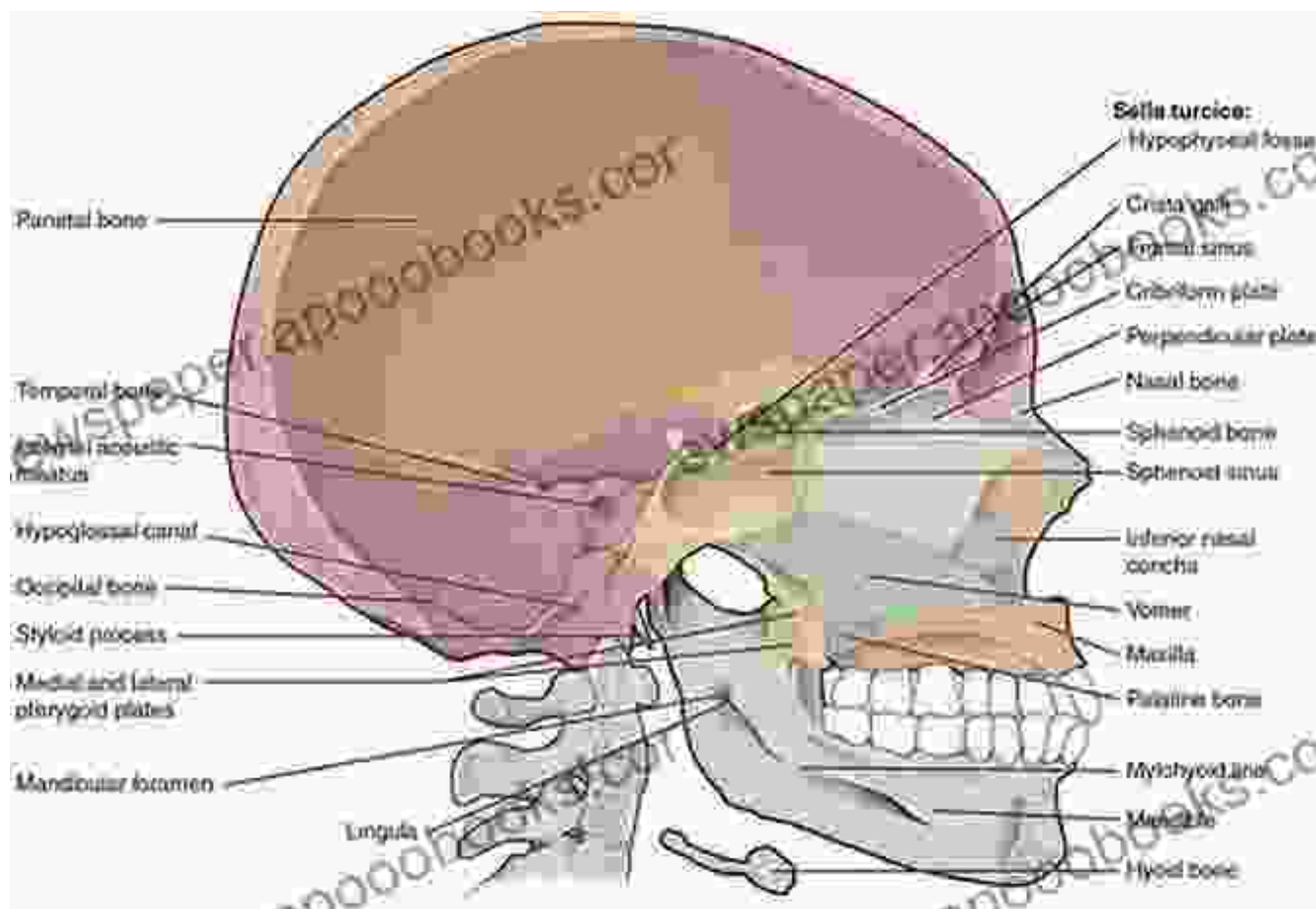
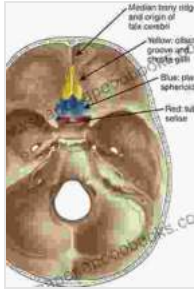


Unlocking the Enigma of Midline Skull Base Surgery: An In-Depth Exploration with James Edward

The intricate realm of midline skull base surgery presents a daunting challenge to surgeons, requiring exceptional skill and an intimate understanding of the complex anatomy involved. In this meticulously crafted article, we delve into the intricacies of midline skull base surgery, shedding light on its complexities and advancements with the guidance of renowned neurosurgeon Dr. James Edward.





★★★★★ 5 out of 5

Language : English
File size : 34946 KB
Text-to-Speech : Enabled
Screen Reader : Supported
Enhanced typesetting : Enabled
Print length : 739 pages



Navigating the Complex Terrain of the Midline Skull Base

The midline skull base, situated at the center of the anterior skull, is a narrow and highly complex region that houses critical structures such as the sella turcica, which accommodates the pituitary gland, and the optic nerves. Tumors and other lesions in this area can pose immense surgical challenges, as they can affect vital neurovascular structures and disrupt essential bodily functions.

The Role of Microsurgery and Endoscopy

In the realm of midline skull base surgery, microsurgery and endoscopy have emerged as indispensable techniques. Microsurgery involves the use of a high-powered microscope to provide magnified visualization, enabling surgeons to meticulously dissect and remove tumors while preserving delicate surrounding tissues. Endoscopy, on the other hand, allows surgeons to access the midline skull base through natural openings or tiny incisions, reducing the need for extensive open surgery and minimizing trauma.

Advanced Imaging for Precision

Advances in imaging technology have played a pivotal role in enhancing the precision and safety of midline skull base surgery. Preoperative imaging modalities, such as MRI and CT scans, provide detailed anatomical maps of the surgical field, enabling surgeons to plan their approach meticulously. Intraoperative imaging, including real-time navigation and fluorescence microscopy, further guides surgeons during the procedure, ensuring the complete removal of tumors while minimizing damage to surrounding structures.

Case Studies and Pearls of Wisdom from Dr. James Edward

Dr. James Edward, a leading authority in midline skull base surgery, shares his invaluable insights and experiences through compelling case studies. He emphasizes the importance of meticulous preoperative planning, precise surgical techniques, and a deep understanding of the underlying pathology. By embracing a comprehensive approach that encompasses advanced imaging, state-of-the-art equipment, and a multidisciplinary team, Dr. Edward achieves exceptional outcomes, preserving neurological function and enhancing patient recovery.

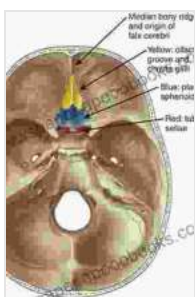
The Benefits of Minimally Invasive Techniques

Minimally invasive techniques, guided by microsurgery and endoscopy, offer numerous advantages in midline skull base surgery. These techniques result in smaller incisions, reduced tissue damage, and faster recovery times. They also minimize the risk of complications, such as infection and hemorrhage, and facilitate the preservation of vital structures, such as nerves and blood vessels.

Challenges and Limitations

Despite the advancements in midline skull base surgery, there remain challenges and limitations. Tumors located deep within the skull base, in close proximity to critical structures, present a significant surgical challenge. Additionally, the risk of complications, such as cerebrospinal fluid leaks and infection, requires careful consideration and meticulous surgical planning.

The field of midline skull base surgery is constantly evolving, driven by advances in technology and surgical techniques. With a deep understanding of the complex anatomy, state-of-the-art equipment, and the expertise of skilled surgeons like Dr. James Edward, patients can expect optimal outcomes and improved quality of life after midline skull base surgery. This comprehensive article provides an in-depth exploration of the complexities and advancements in this challenging surgical field, empowering patients and medical professionals alike with a greater understanding of the intricacies of midline skull base surgery.



Midline Skull Base Surgery by James Edward

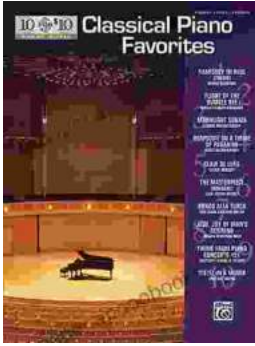
★★★★★ 5 out of 5

Language : English
File size : 34946 KB
Text-to-Speech : Enabled
Screen Reader : Supported
Enhanced typesetting : Enabled
Print length : 739 pages

FREE

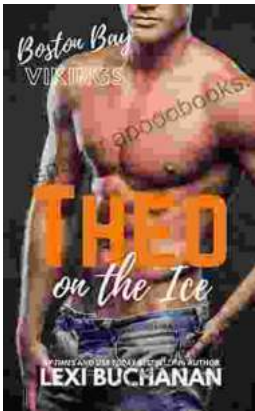
DOWNLOAD E-BOOK





Discover the Enchanting World of Classical Piano with "10 For 10 Sheet Music Classical Piano Favorites Piano Solos"

A Symphony of Timeless Masterpieces Prepare to be captivated by a harmonious blend of classical masterpieces in "10 For 10 Sheet Music Classical Piano...



Theo On The Ice Boston Bay Vikings: A Hockey Adventure for the Ages

Theo On The Ice Boston Bay Vikings is a thrilling hockey adventure that will captivate readers of all ages. Theo, a young boy with a dream of playing...